

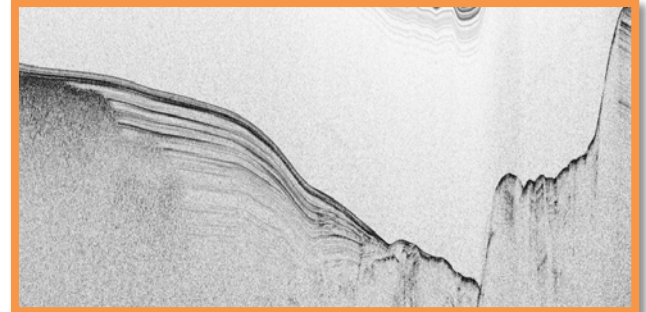
Lecture on Submarine Slides within the Continental Shelf

**Presented By
Gunnar Link**

(Senior Geophysicist at Fugro Survey Ltd)

Dipl.-Geol, CSci, FGS

Gunnar's talk will be on submarine slides and their evolution and structure and an interpretive view from geophysical data. At the beginning of the presentation, trigger mechanisms for slides are shown and explained. The major part of the talk comprises presentation and discussion of geological and morphological features observed within different types of geophysical survey data. Key features for the detection and interpretation of the MTC will be explained. Examples presented comprise geophysical data from the Norwegian Sea, the Mediterranean, the Caspian and the Middle East, acquired during route and site surveys.



These Submarine slides or Mass Transport Complexes (MTC) are frequently observed along continental margins around the earth. These slides transport significant amounts of sediments into the deeper sea and form geological and morphological features within a relatively short time. These slides can represent geohazards to offshore infrastructure and, if larger scale, to coastal settlements when triggering tsunamis. Ancient Mass Transport Complexes are important for hydrocarbon exploration as they can act as traps, but also need to be considered when drilling through or acting as foundation-ground for offshore structures. There are different causes of unstable sediment on submarine slopes: Oversteepening by sedimentation, sudden disturbance by earthquakes, pore pressure changes by sea-level falls and instability of gas hydrates.

Date: 15th March 2018

Venue: Brunel University, Kingston Lane, Uxbridge UB8 3PH

Refreshments from 18.00

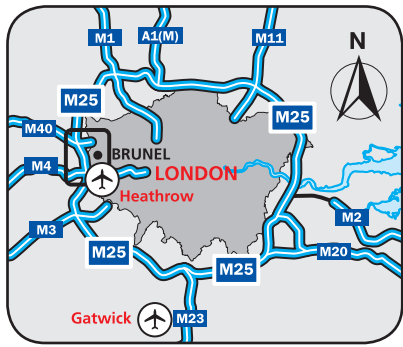
Meeting starts at 18.30

It is expected to finish by about 19.30

This event is free of charge

With a special thanks to Brunel University for hosting the event!





Getting to Brunel University London

BY BUS

From Heathrow Central: A10 "Heathrow Fast", every 15 minutes, journey time approx 25 minutes (alight Hillingdon Rd at 'The Greenway' and use footpath to campus).

From Stockley Park: A10 "Heathrow Fast" as above, journey time approx 10 minutes.

From West Drayton railway station:

U3 (alight Cleveland Road)

U1 (alight Kingston Lane)

222 (alight Cowley Road and use path via Zone A, see campus map).

From Uxbridge (underground) station:

U3 (alight Cleveland Road)

U1 (to West Drayton) U4 and U7

(alight Kingston Lane)

222 and U5 (alight Cowley Road and use path via Zone A, see campus map).

BY UNDERGROUND

(Transport for London) For Uxbridge Station take the Metropolitan Line from central London (and Piccadilly Line during peak hours). Then take a taxi, or bus U1, U3, U4 or U7. (Alternatively use the 1-mile walking route shown on the right.)

BY RAIL

West Drayton (First Great Western Link) is the nearest main-line station (approx 1.5 miles from the campus). Services from London Paddington or the West (Bristol). From West Drayton station take a bus towards Uxbridge: 222 (alight Cowley Road), U5 (alight Station Road), U3 (alight Cleveland Road) or U1 (alight Kingston Lane).

West Ruislip Station (Chiltern Railways) is the main-line service from London Marylebone and the North (Aylesbury, Banbury and Birmingham) and is approximately 4 miles from the campus. From West Ruislip Station take the U1 bus towards West Drayton, alight Kingston Lane.



BY ROAD

Entry by car is via Kingston Lane only.

Sat Nav users: Please enter the road address (Kingston Lane) and the postcode (UB8 3PN). You will be directed to Kingston Lane, which is very close to our main entrance. From there, please follow the signs.

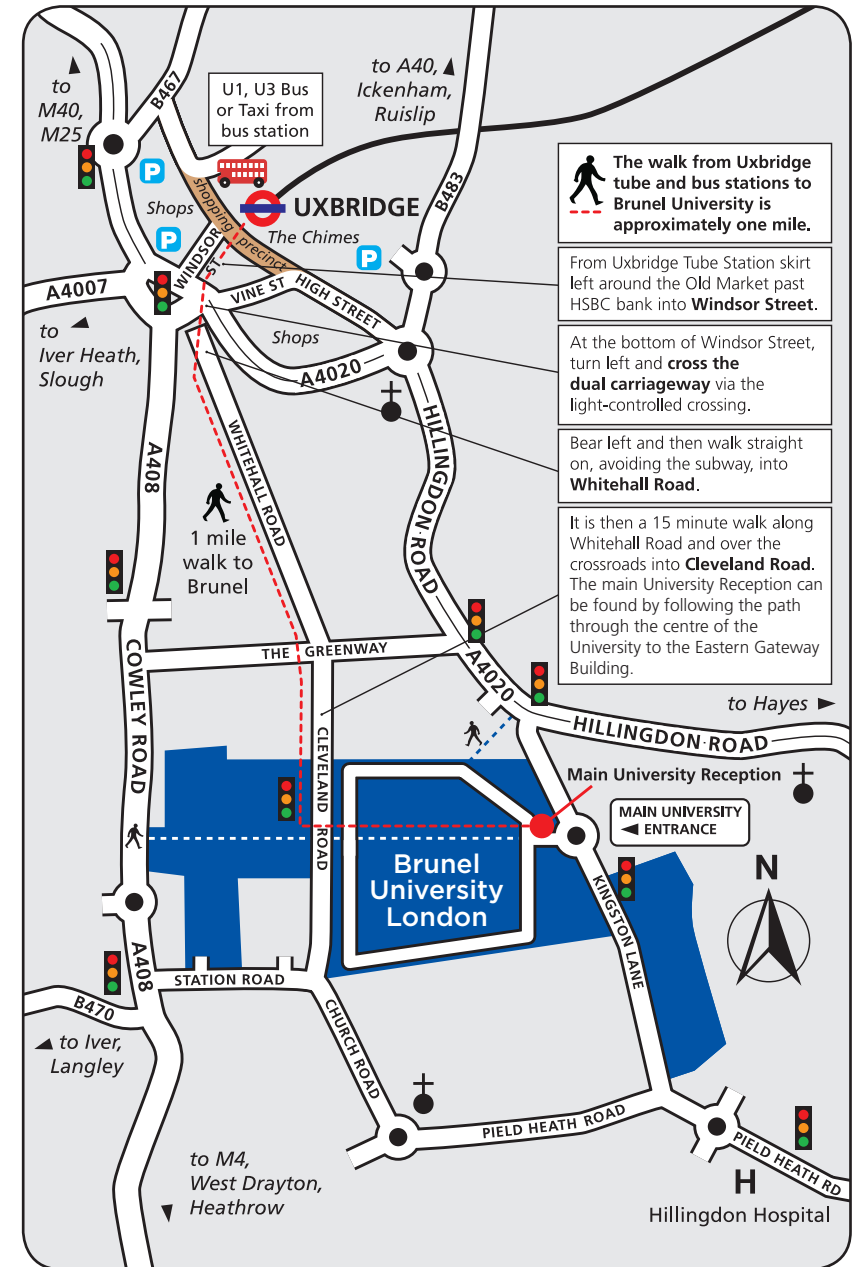
Parking on the Uxbridge Campus and in the local area is very restricted. Barriers control access to the site and all vehicles must display a valid permit. On arrival, pay-and-display parking is available. In addition, parking may also be pre-booked (restrictions apply).

Parking Charge Notices will be issued for illegally parked vehicles and vehicles not displaying a valid Brunel parking permit or Pay & Display ticket.

M4: Leave M4 at Junction 4 and follow signs to Uxbridge (A408). Straight across

first set of traffic lights, continue on A408, crossing four roundabouts. Turn right at the next set of major traffic lights. Continue ahead to next set of lights and, almost immediately, take the right filter lane at second set of traffic lights into Station Road. Continue straight on into Church Road and take the first exit at a mini-roundabout into Pield Heath Road. Turn left into Kingston Lane and left into the University. Follow signs for Main Reception as you enter the campus.

A40/M40: At Swakeleys Roundabout take B483 exit to Uxbridge. Follow signs across two mini-roundabouts. At major roundabout bear left onto A4020 (Brunel sign), straight ahead at the first lights, then almost immediately take second right filter turn onto Kingston Lane (signposted Brunel). The main entrance to Brunel is right at the next roundabout.



The walk from Uxbridge tube and bus stations to Brunel University is approximately one mile.

From Uxbridge Tube Station skirt left around the Old Market past HSBC bank into Windsor Street.

At the bottom of Windsor Street, turn left and cross the dual carriageway via the light-controlled crossing.

Bear left and then walk straight on, avoiding the subway, into Whitehall Road.

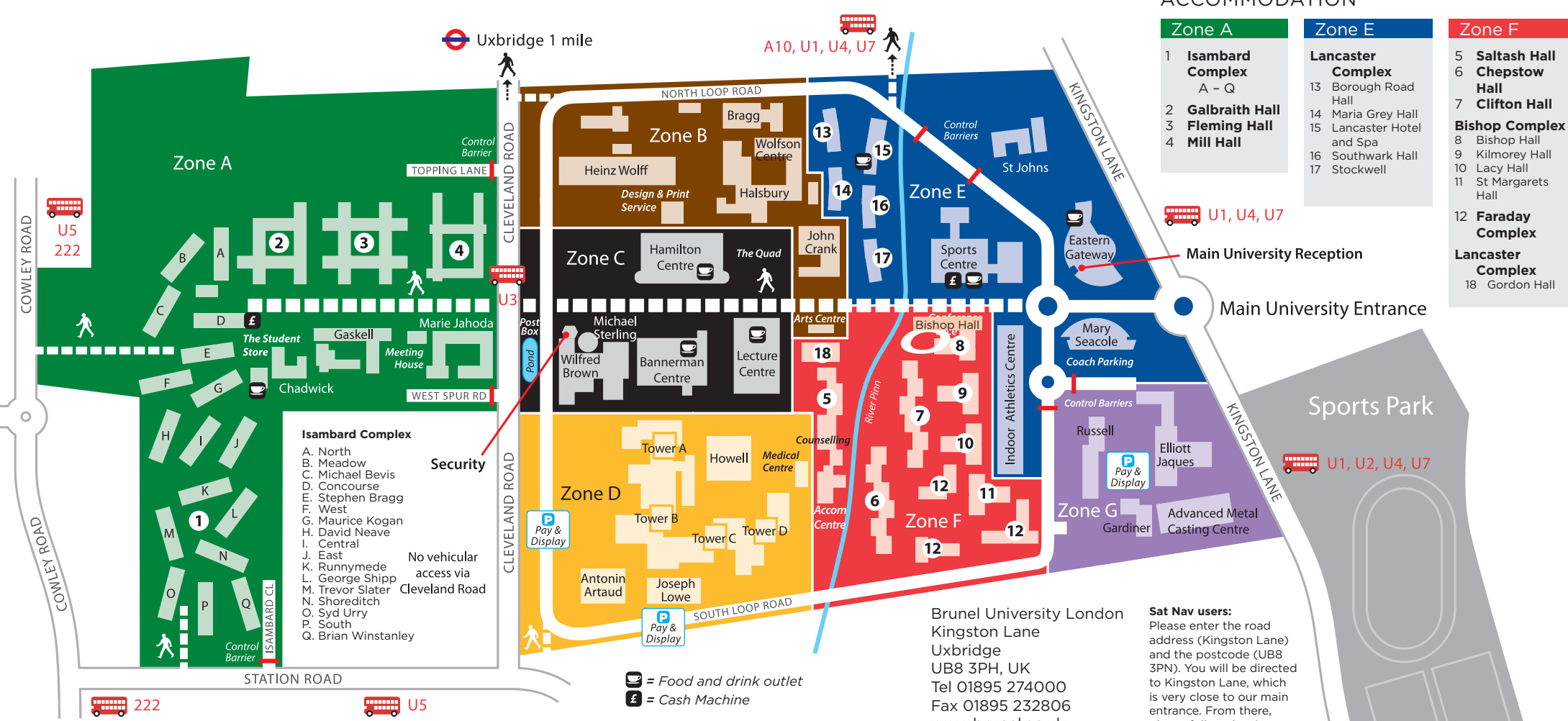
It is then a 15 minute walk along Whitehall Road and over the crossroads into Cleveland Road. The main University Reception can be found by following the path through the centre of the University to the Eastern Gateway Building.

Follow signs for Main Reception as you enter the campus.

M25: (From North or South) Join M40 or M4 then see above.

VISITOR PARKING FOR DISABLED BLUE BADGE HOLDERS

Accessible parking bays are available at various locations around the campus. Please collect a permit on arrival from Main Reception, Eastern Gateway Building.



Brunel University London Campus Map

Zone A
Chadwick
Gaskell
Marie Jahoda
Meeting House
The Student Store

Zone B
Arts Centre
Bragg
Design and Print Service
Halsbury
Heinz Wolff
John Crank
Wolfson Centre

Zone C
Bannerman Centre
Hamilton Centre
Lecture Centre
Michael Sterling
Wilfred Brown

Zone D
Antonin Artaud
Joseph Lowe
Medical Centre
Tower A
Tower B
Tower C and D

Zone E
Indoor Athletics Centre
Eastern Gateway
Lancaster Suite
Mary Seacole
Sports Centre
St Johns

Zone F
Accommodation Centre
Brunel Campus Rooms
Brunel Student Lettings
Conference Office
Counselling Service
Housing Office

Zone G
Advanced Metal Casting Centre
Brunel Science Park
Elliott Jaques
Gardiner
Russell
Sports Park
Sports Pavilion

Map last updated 06/09/17
To download the latest version visit www.brunel.ac.uk/about/campus/directions